

# How Could A Water Stewardship Standard Work?

## The AWS Theory of Change



Matthew Wenban-Smith – OneWorldStandards

“A good story cannot be devised; it has to be distilled”

Raymond Chandler

## Impacts: the undesirable consequences of human induced effects on water...

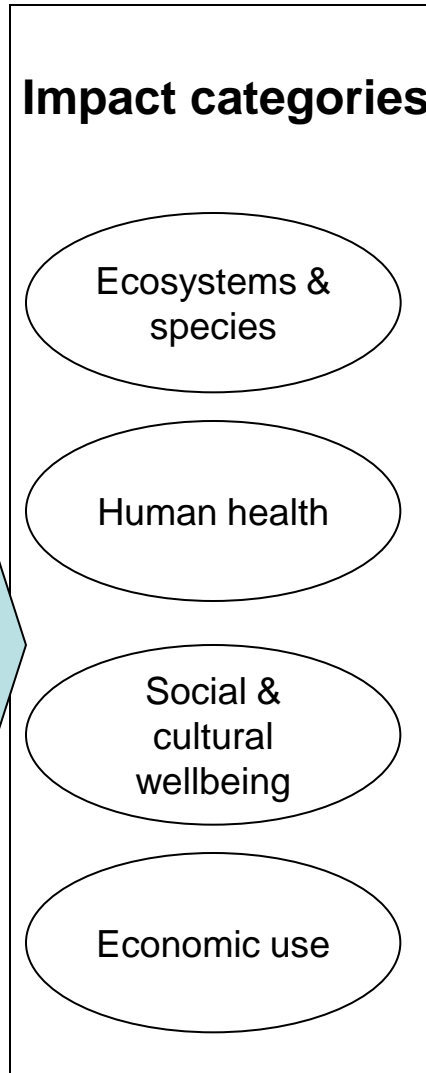
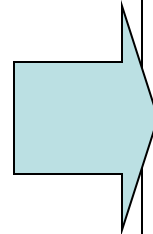
e.g.

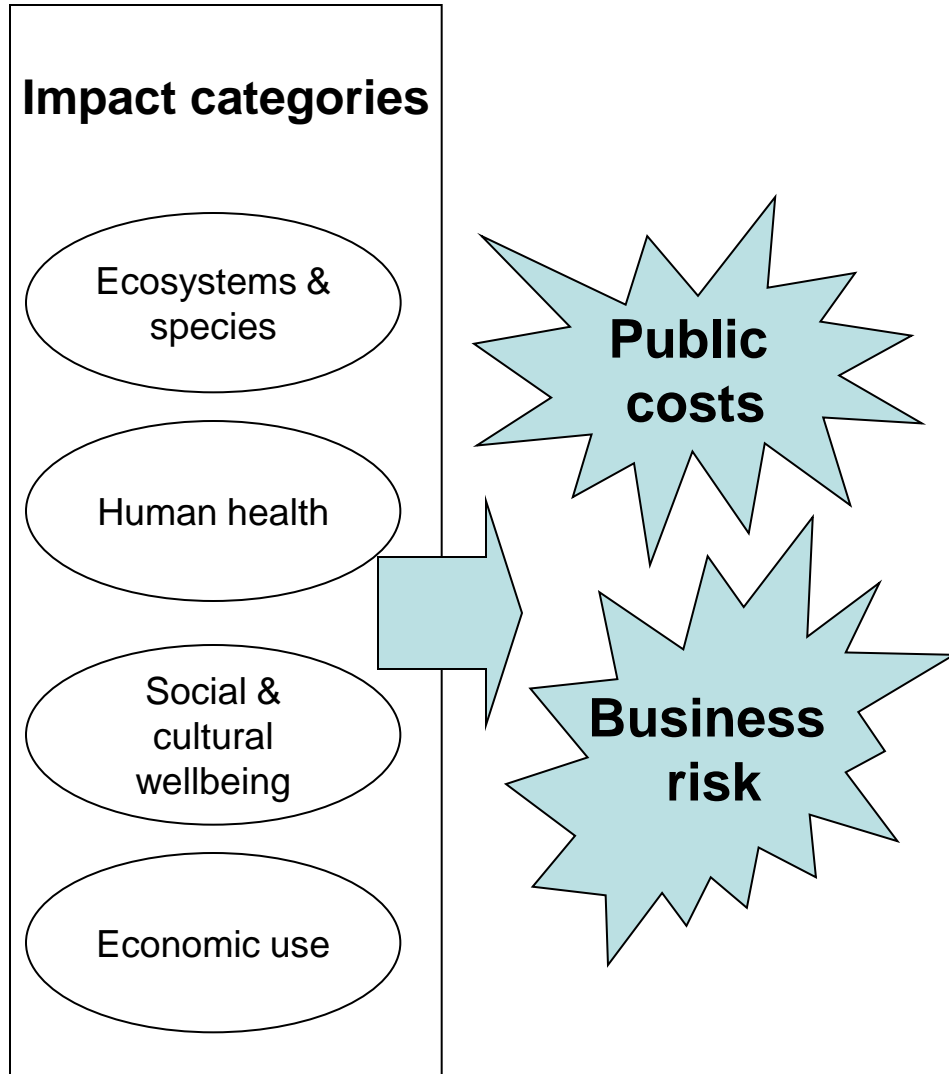
- Loss of drinking water (impacts to quantity or quality)
- Loss of fisheries, shellfish, edible aquatic plants
- Loss of tourism
- Loss of hydropower generation potential
- Physical disruption of water supply
- Increased costs for cleaning poor-quality water
- Livelihood value
- Etc, etc, etc

## Impacts: the undesirable consequences of human induced effects on water

e.g.

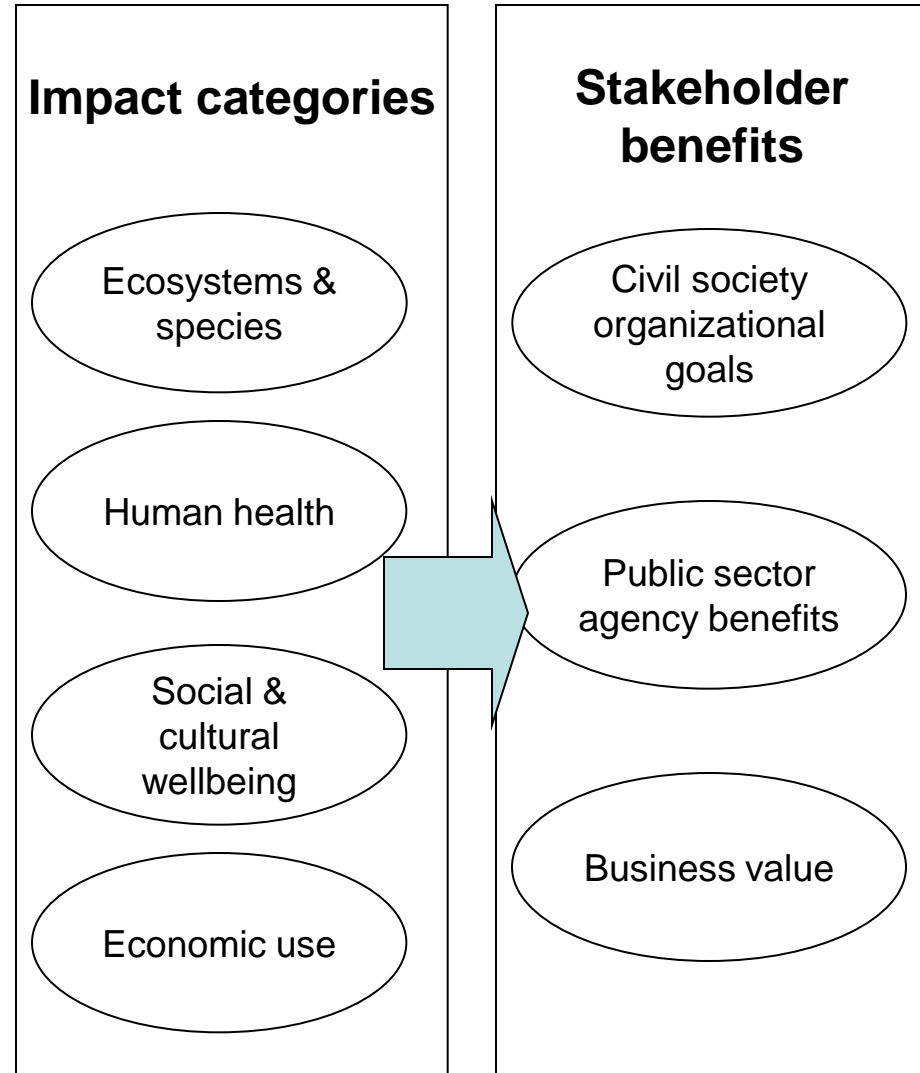
- Loss of drinking water (impacts to quantity or quality)
- Loss of fisheries, shellfish, edible aquatic plants
- Loss of tourism
- Loss of hydropower generation potential
- Physical disruption of water supply
- Increased costs for cleaning poor-quality water
- Livelihood value
- Etc, etc, etc

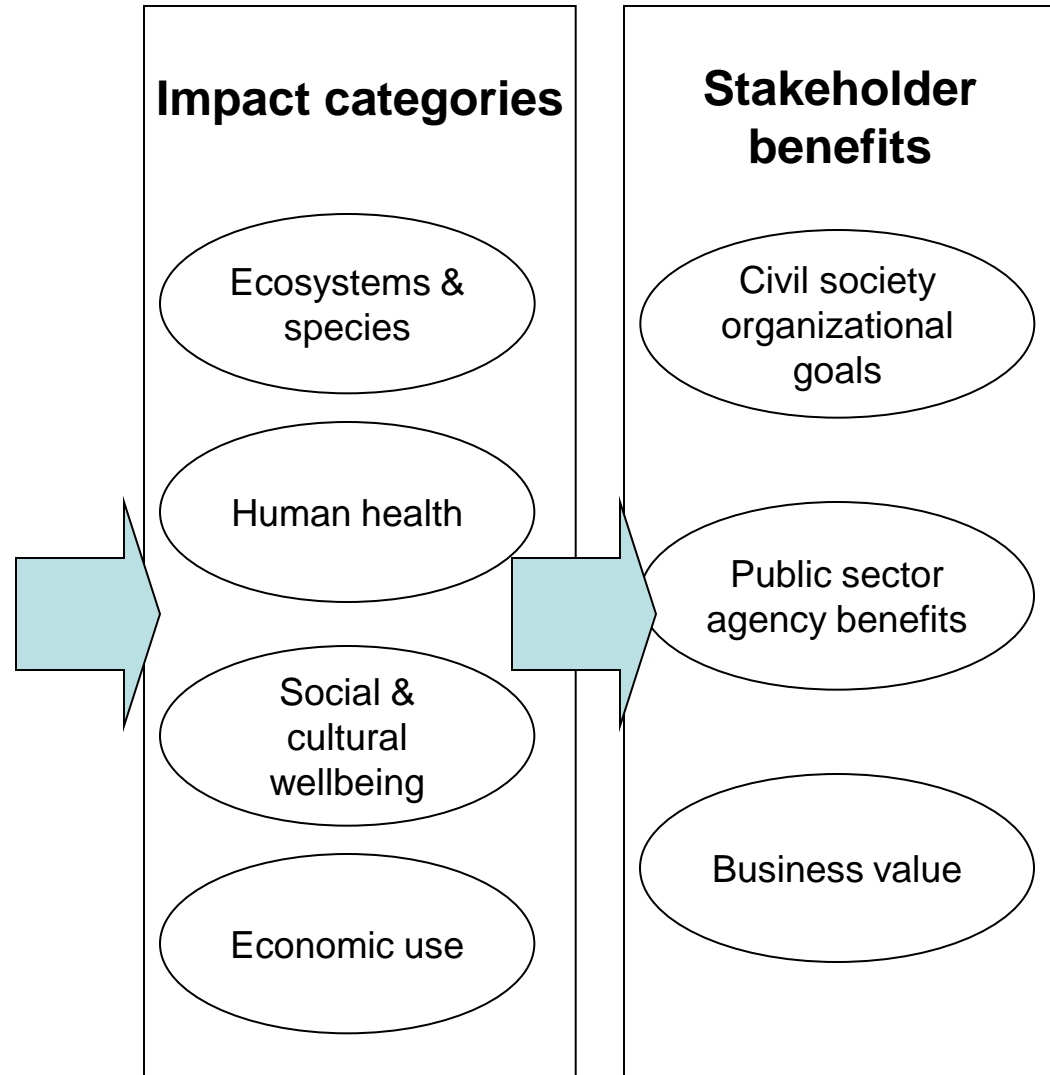


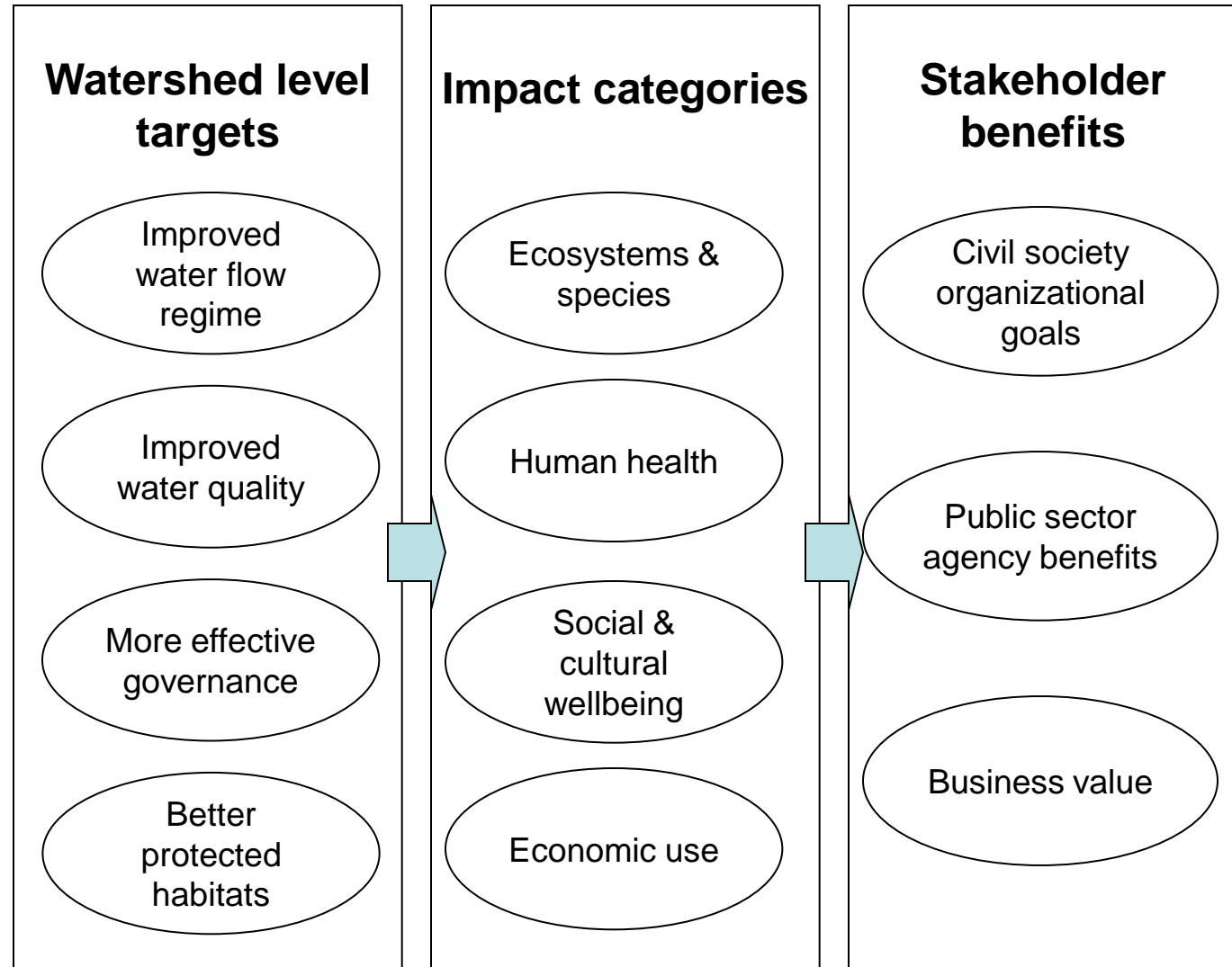


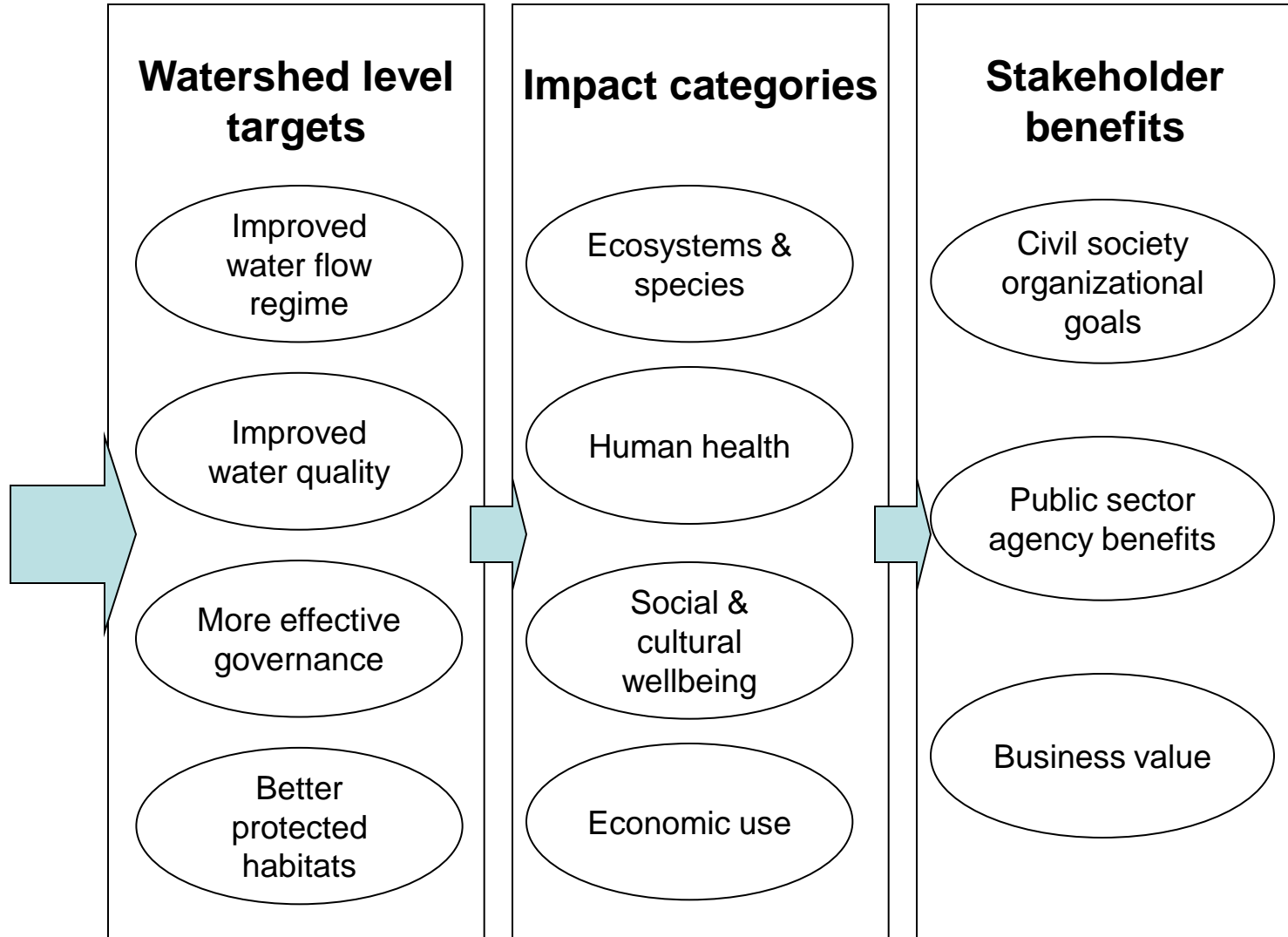
## Reducing impacts will result in a range of benefits for different stakeholders

- **Civil society organizations**
- **Public sector agencies**
- **Businesses & water service providers**
  
- **reduced risk and cost**
- **business opportunities**
- **support achievement of a range of civil society organization goals**
- **contribute to a range of public policy objectives**









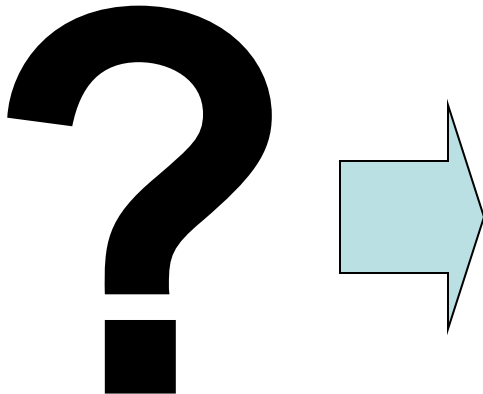
## What can managers *do* to achieve change in key watershed level targets?

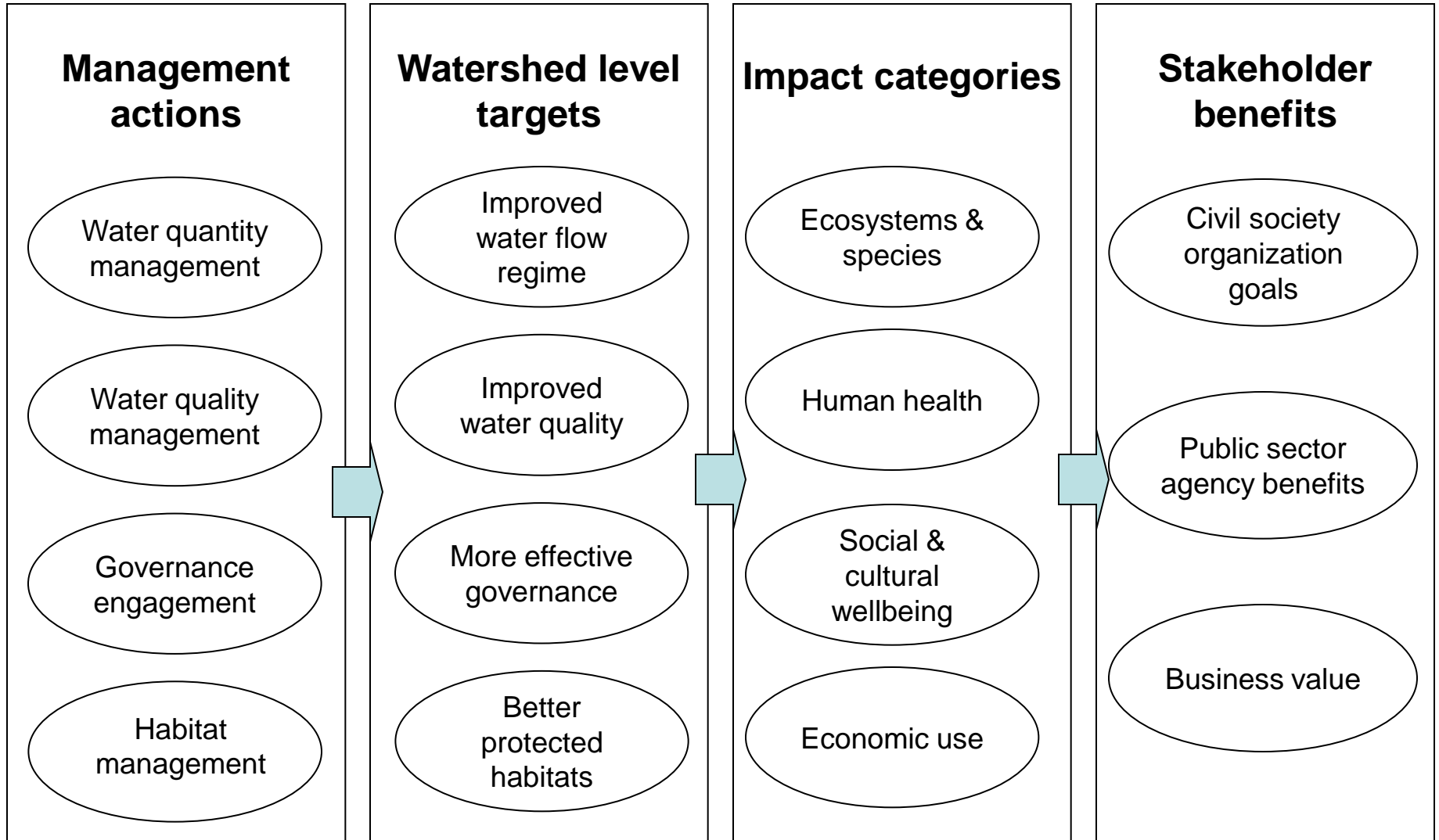
**Management of water quantity**  
e.g. abstraction, demand...

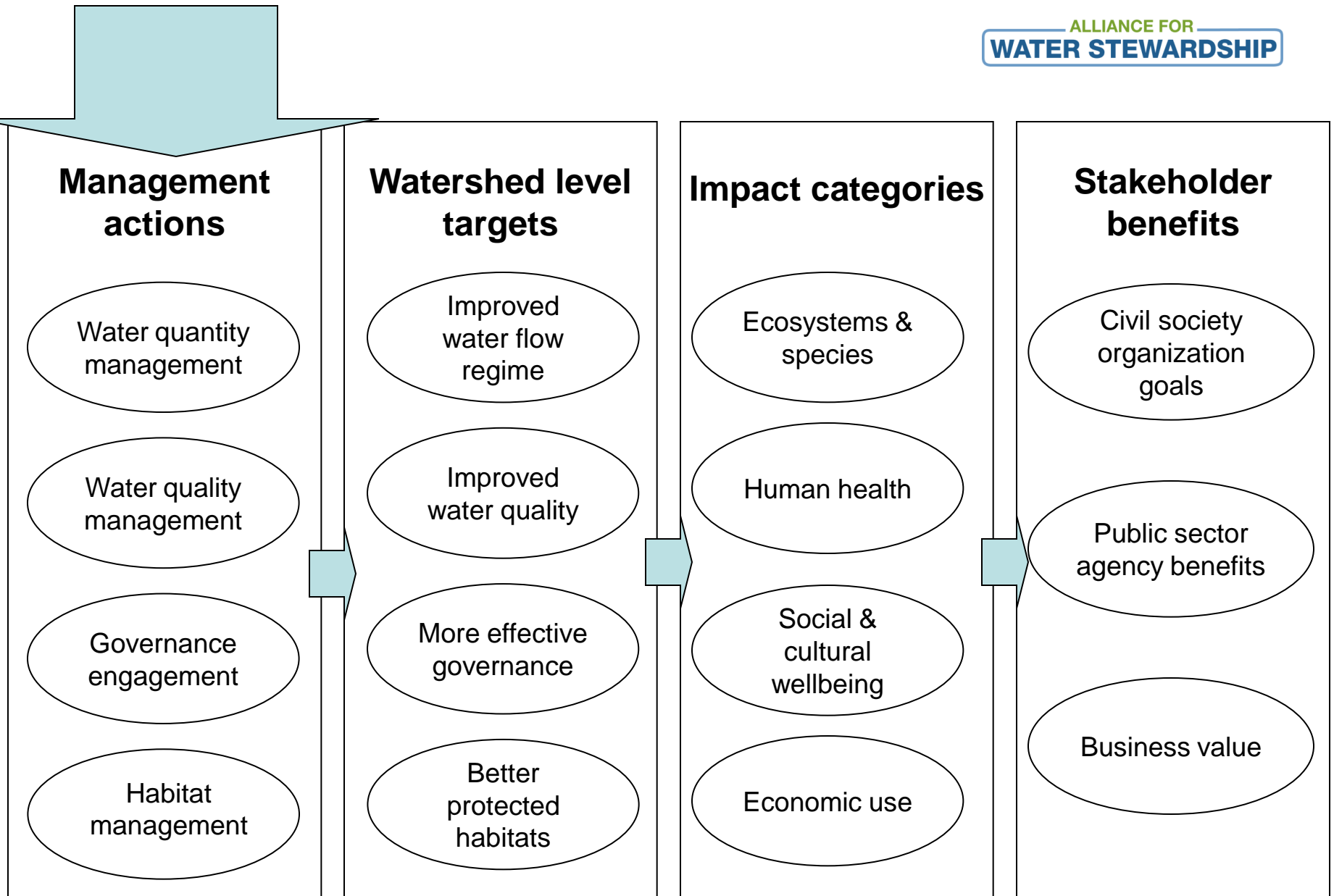
**Management of water quality**  
e.g. pollution load, diffuse runoff...

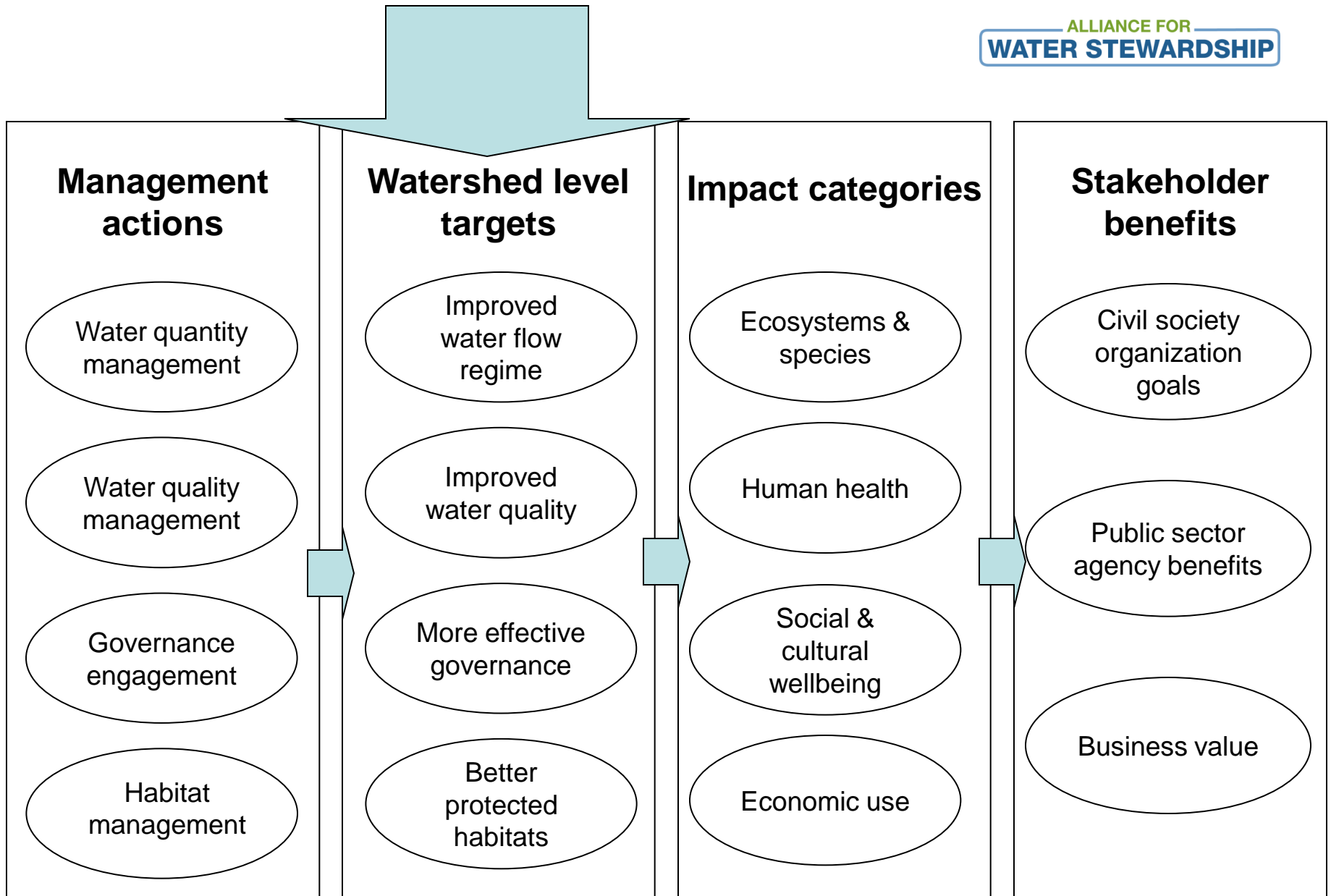
**Interaction with catchment governance**  
e.g. stakeholder platforms, transparency, catchment level monitoring...

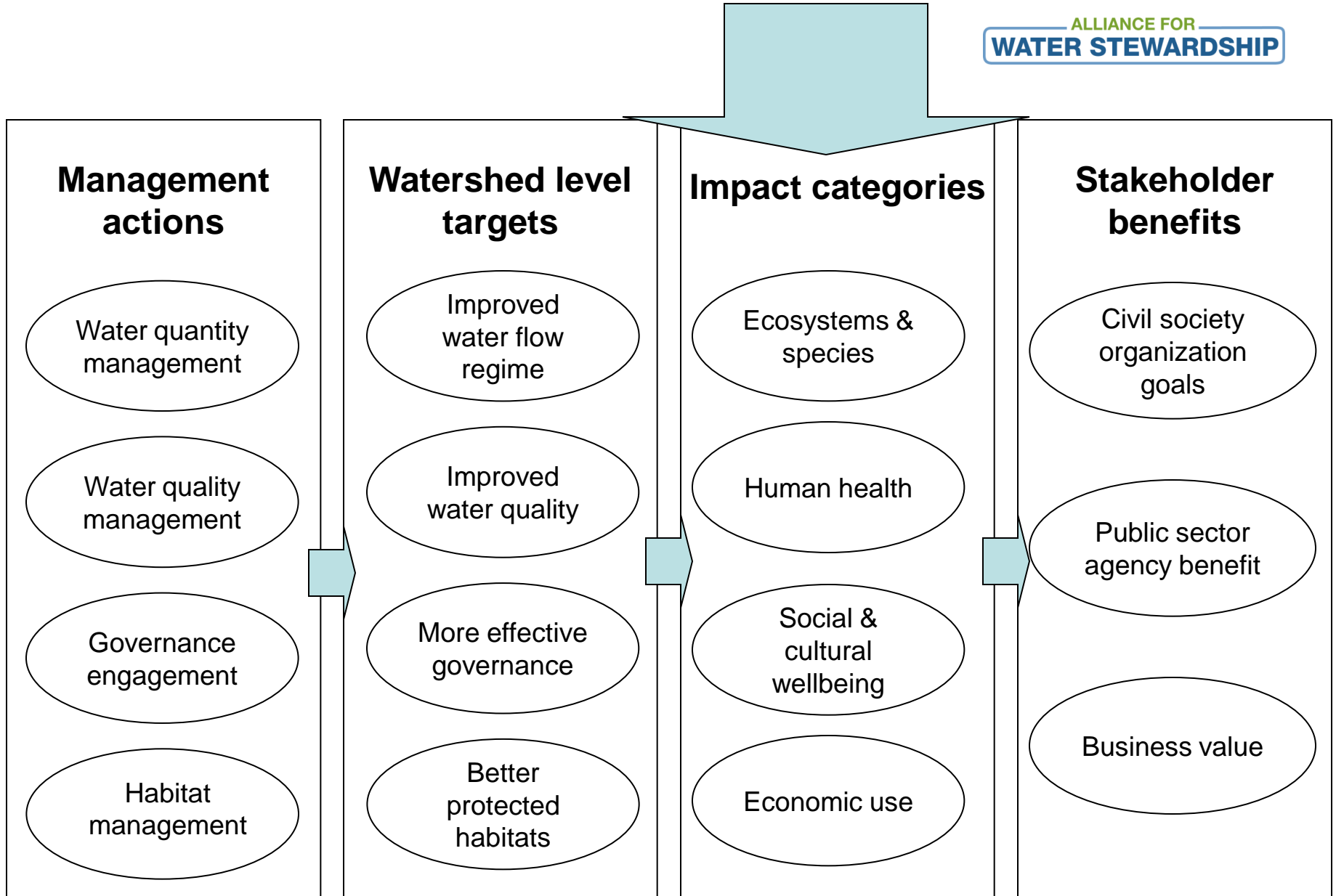
**Management of habitat**  
e.g. identification and protection of high conservation value areas...

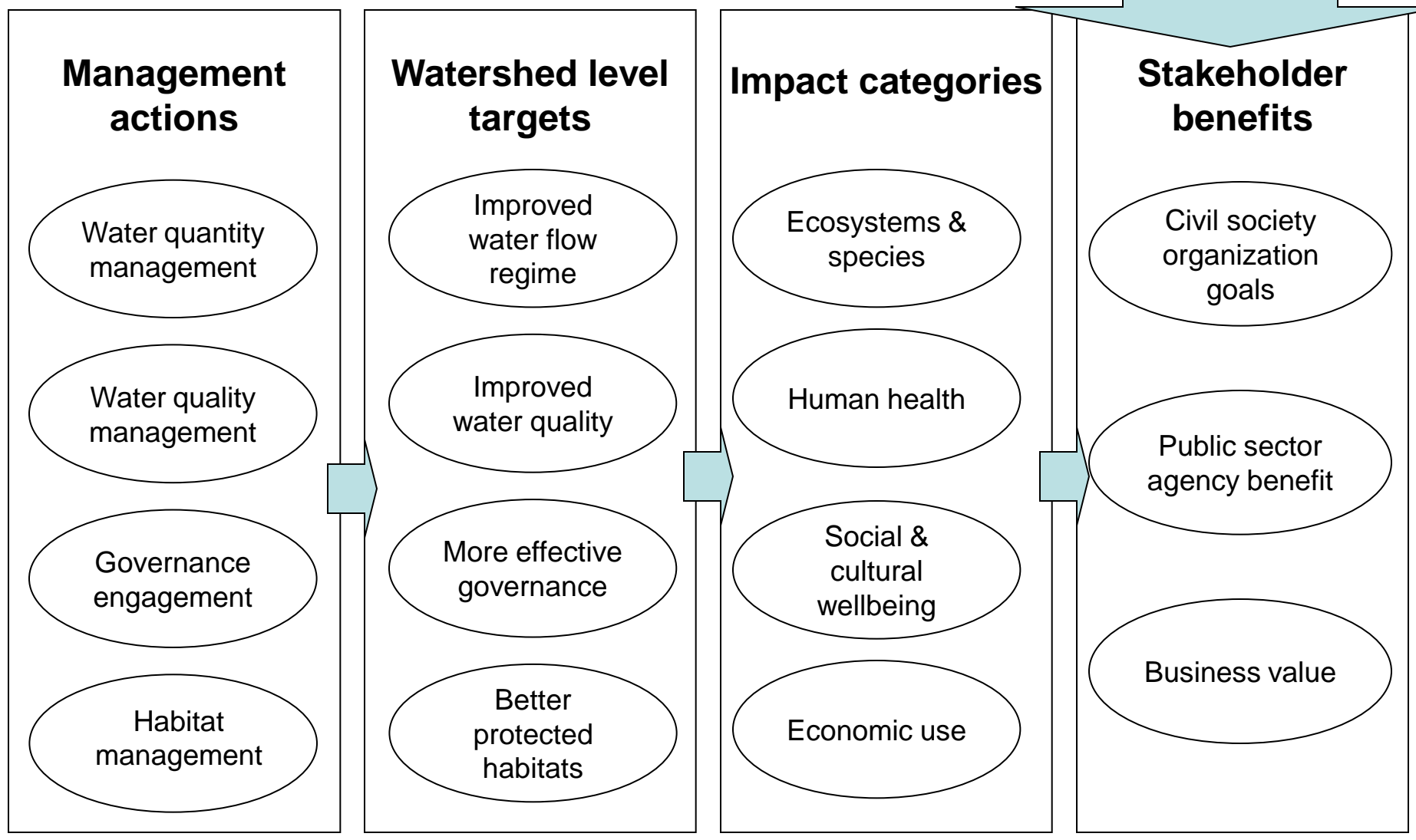












# Discussion Questions:

## Testing core assumptions

- ▶ Are proposed watershed level targets (flow, quality, governance and habitat) effective mediators of impact? Something missing?
- ▶ Can management actions really effect watershed level targets?
- ▶ Are the proposed categories of management actions (quantity, quality, governance, habitat) really useful?
- ▶ Can we codify management actions (and watershed level targets?) that are internationally applicable?
- ▶ Are 'win-win-win' outcomes possible for different stakeholder groups?

....Other issues?